

## C4L3 Notes

### DOMAIN AND RANGE

### INDEPENDENT AND DEPENDENT

**Domain:** the set of x-values in ascending order

**Range:** the set of y-values in ascending order

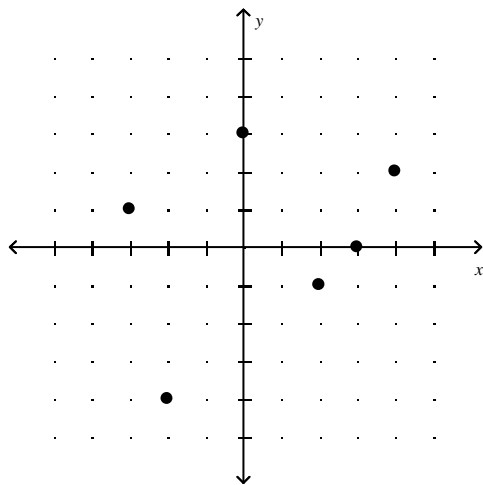
Give the domain and range of each set of numbers.

1.  $\{(-3, 1), (4, -2), (6, -3), (8, -2)\}$

2.

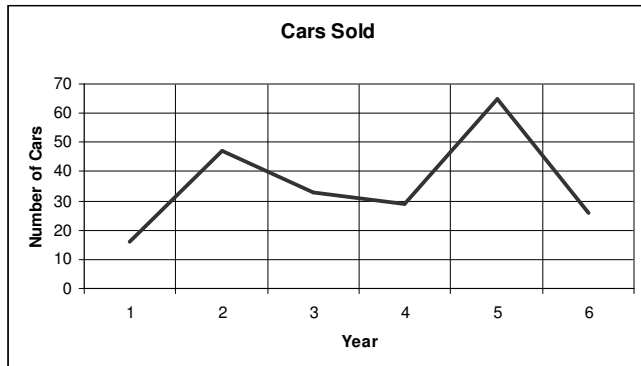
<b>x</b>	<b>-4</b>	<b>-1</b>	<b>2</b>	<b>5</b>
<b>y</b>	<b>9</b>	<b>5</b>	<b>1</b>	<b>-3</b>

3. State the domain and range of the graphed relation.

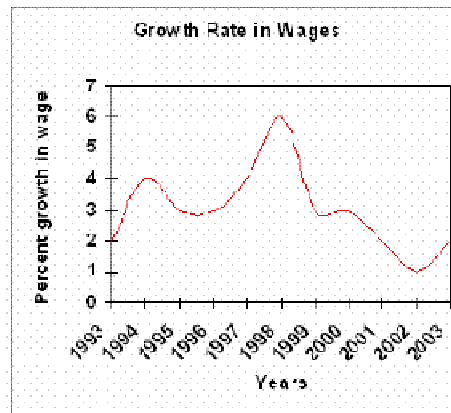


**Give the domain and range for the graph.**

**4.**



**5.**



**Identify the independent and dependent variables.**

**6. Susie owns a typing business. Her pay is based on the number of pages she types.**

**7. John owns a stained glass business. He charges different prices for making stained glass of different sizes.**